

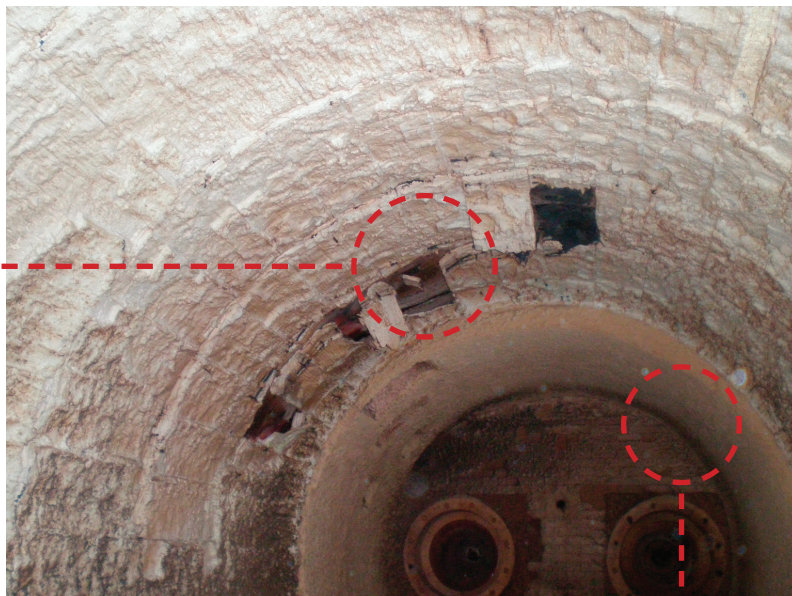
A coating of **KC2000** will provide your kiln or furnace with these additional benefits:

- **Chemical resistance**
- **Abrasion resistance**
- **Longer service life**
- **Increased fuel savings**
- **Increased efficiency**
- **Improved productivity**

A coating of KC2000 was applied to this incinerator afterburner around its burner end.

However, the remaining sections of lining were not coated with KC2000 - by request of the customer.

It is evident to see that the uncoated surfaces of the lining have suffered from **chemical and abrasive damage** and will have to be repaired - an expensive cost that could have been averted had the lining been **completely coated**.



**Burner section coated with KC2000 - minimal damage**

The KC2000 coating forms an 'egg shell' finish which fully encapsulates and protects the underlying ceramic fibre lining.

Typically, KC2000 can increase the service life of a kiln/furnace by 25%.



**UNCOATED LINING**

**Burner section coated with KC2000**

**KC2000 can increase the service life of a kiln/furnace by 25%**

UNIT 1 - UNIT 39 - UNIT 113, ANGLESEY BUSINESS PARK  
LITTLEWORTH ROAD, CANNOCK, STAFFORDSHIRE WS12 1NR

T: +44 (0)1543 871787 F: +44 (0)1543 425757  
E: [info@fcs-ltd.com](mailto:info@fcs-ltd.com) W: [www.fcs-ltd.com](http://www.fcs-ltd.com)

